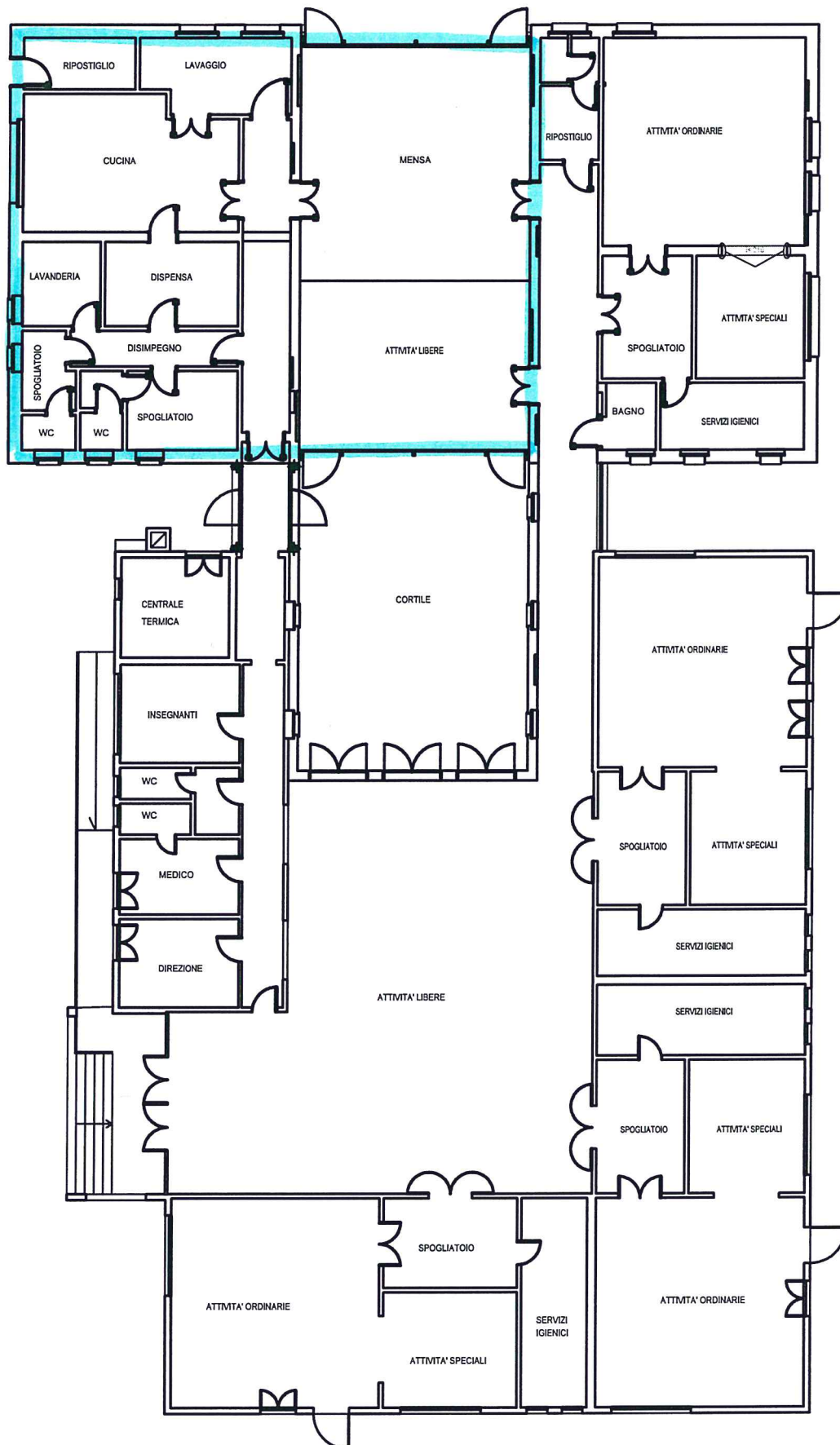


SCUOLA MATERNA RESISTENZA

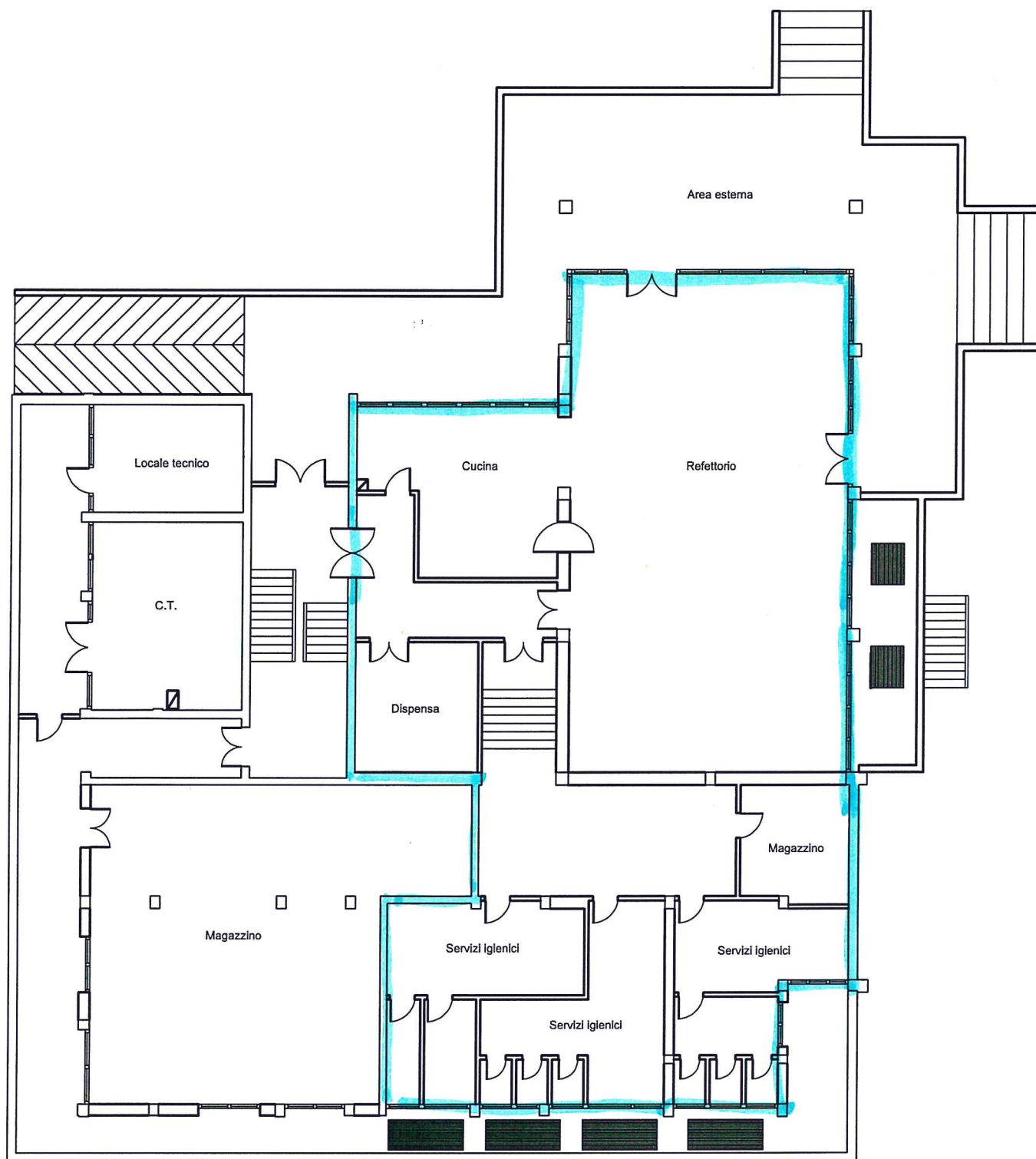
PIANTA PIANO TERRA





SCUOLA MATERNA ED ELEMENTARE SAN BIAGIO

Pianta piano seminterrato

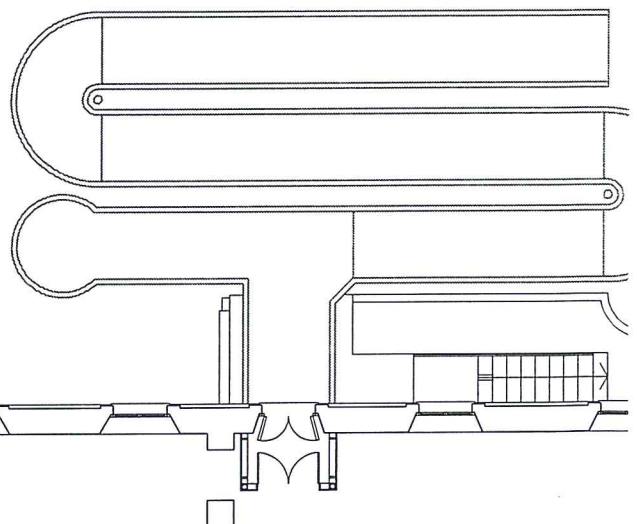


maggio 2006 - scala 1:200

The floor plan illustrates the layout of the first floor, featuring a central corridor (CORRIDOIO) that provides access to various rooms. Key areas include:

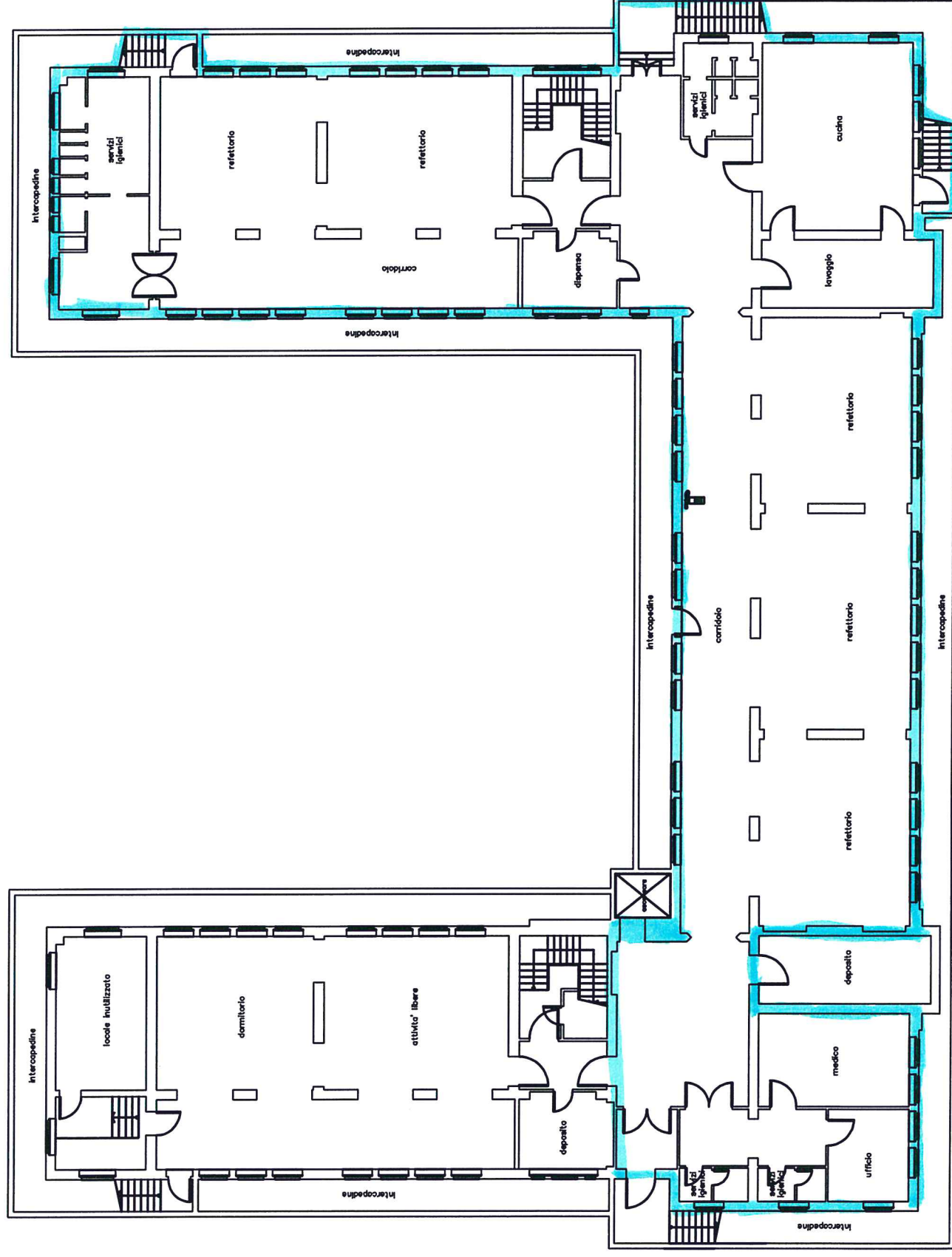
- Top Section:** A large classroom (AULA) with a door leading to a staircase (105/238). Below it is a rest room (U.S.).
- Middle Section:** A bathroom for children (BAGNO BAMBINI) and a staff office (UFFICIO) with an adjacent changing room (SPOGLIATOIO BAMBINI). A central corridor (CORRIDOIO) connects these areas.
- Lower Middle Section:** Another classroom (AULA) with a rest room (U.S.) and a staircase (105/238) on the right.
- Bottom Section:** A large dining hall (REFETTORIO - AULA) with a rest room (U.S.) and a staircase (105/238) on the right. Below this is a rest room (BAGNO RIPOSTIGLIO) and a changing room (SPOGLIATOIO PERSONALE). At the very bottom, there is a playground (DISIMPEGNO) and a non-annexed area for the kindergarten (LOCALI NON ANNESSI ALLA SCUOLA MATERNA).

Dimensions for various rooms are provided, such as 120/210 for the top classroom, 80/210 for the middle bathroom, and 120/210 for the bottom corridor. Door swings are indicated by arrows, and a north arrow is located at the top of the plan.



SCUOLA ELEMENTARE A. V. GENTILE

PIANTA PIANO SEMINTERRATO



maggio 2006 - scala 1:250

SCUOLA MATERNA RAPELLI

PIANTA PIANO TERRA
(scala 1:200)

